

TOP

[Introduction](#)

[Specification](#)

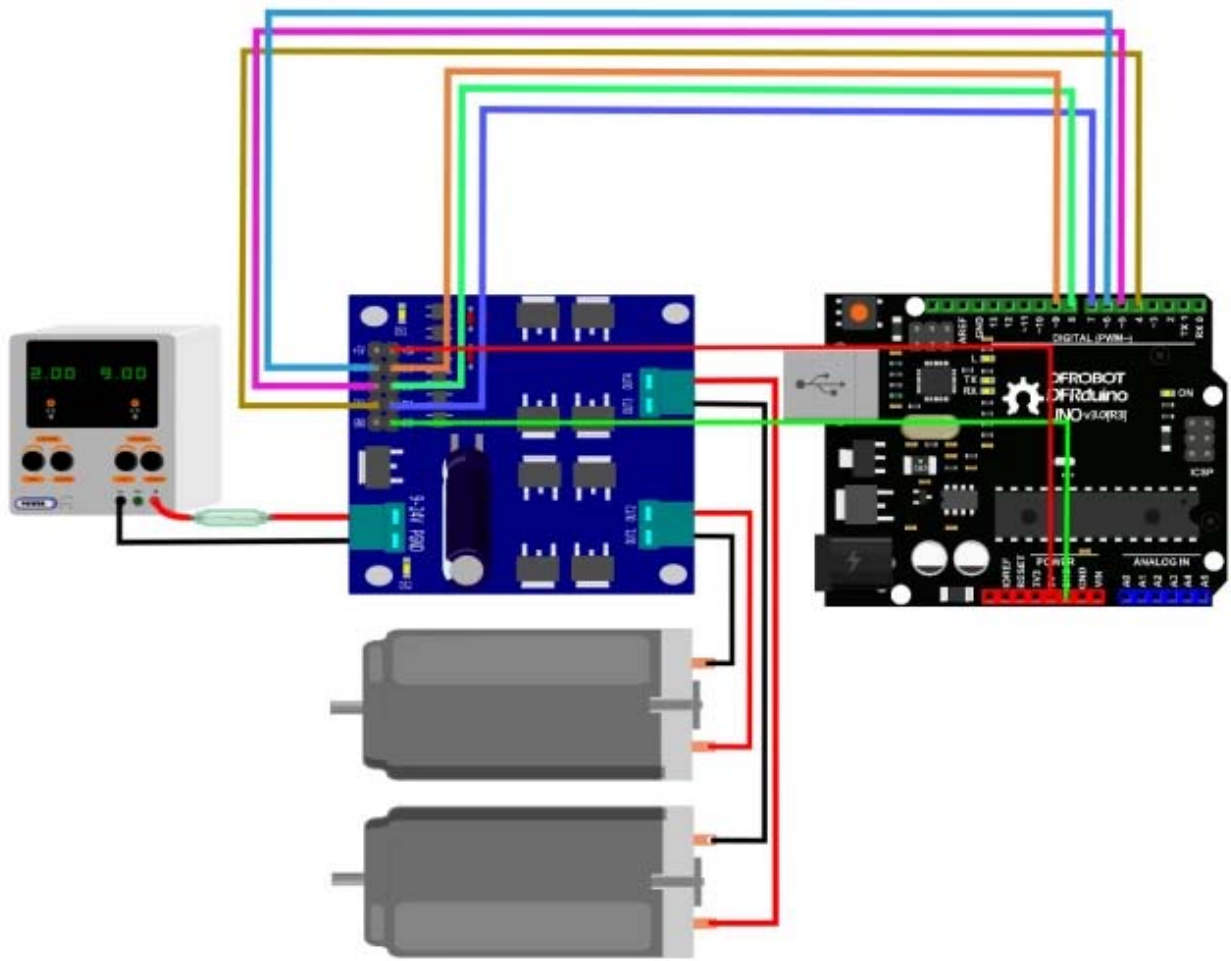
[Documents](#)

[Shipping List](#)

[Review](#)

Introduction

This is an ultra small Dual DC motor driver for some room limited projects. UVLO (Under Voltage Latch-Out) features a safe guard for your system. It is very considerate to own an Photo Coupler isolation for all the signals in case of that the motor's Reverse Current would interfere the control signals. Besides all, all the interfaces includes ESD (electro-static discharge) protection.



Specification

- Voltage supply: DC 7 ~ 24 V
- Voltage supply limit: 6.5 ~ 27 V
- Control signal Level (Compatible 3.3V/5V)
- High: DC 3.0 ~ 6.5 V
- Low: DC 0 ~ 0.8 V
- Output Channel: 2
- Control signal current: 3 ~ 11 mA (Each route)
- Maximum continuous operating current: 7 A
- Peak current: 50 A

- Speed control: PWM
- Minimum valid Pulse Width: 5 us
- Working Temperature: -25 ~ 85 °C
- Mounting Hole: M3
- Dimension (Length * Width * Height): 55 x 55(mm)/2.165 x 2.165(in)
- Weight: 32g

Documents

- [Product WIKI](#)

Shipping List

- 7A Dual DC Motor Driver x1

Review

Silas.Hung Sep 23, 2025 

We test two motors that draw 2.5A each, and the board doesn't heat up, which is good.

Nicola.Piga Dec 30, 2020 

Fast shipment and the piece is working as expected. Thank you DFRobot!

[Robotics](#)

[Robotics Projects](#)

[Robotics Forum](#)

[Robotics Tutorials](#)

^
TOP



Only 5 Left

2x7A DC Motor Driver

\$21.00

Add to Cart

Shop Now



Information Customer Service

[About Us](#)

[Warranty](#)

[Terms & Conditions](#)

[Shipping](#)

[Payment](#)

[FAQ](#)

[DFRobot](#)

[Distributors](#)

[Contact Us](#)

[Site Map](#)

My Account



DFROBOT®
DRIVE THE FUTURE

[Affiliates](#)

[Specials](#)

Sign up for exclusive offers!

Your email address



Like us on



Copyright © 2025 DFRobot. All rights reserved.



TOP